

CABLE CONNECTORS

- Aluminum or Copper material
- AAC, ACSR, ACAR, Ropelay, Copper & Metric Cables
- Pre-drilled inspection/weep hole
- Split, EHV and tin-plated versions available
- Custom angles, pads and barrel spacing
- Single Swage installation
- Instant inspection with Go/No-Go Gauge
- No bird caging or bent connectors

STATE OF THE ART SWAGE TECHNOLOGY

Substation customers around the world trust DMC Power's patented Swage system on their most critical Transmission and Distribution connections.

Once you experience the peace of mind that our superior connection provides and the all-weather, time saving capabilities of our cutting edge design, you'll never go back to your old way of installing electrical cable connections again.

Cable Swage System Advantages:

• SAVE TIME

Lightweight tool uses just one 360° compression instead of multiple crimps.

• COMPLETE 360° CONTACT

Swaging creates a virtually void free connection and maximizes conductivity by compressing the interior of the fitting around the exterior of the cable.

• FINISHED PADS

Both sides of the extruded aluminum pad can be used equally as a connection surface.

• TIN PLATING

Available on all connectors for use with dissimilar metals and to deter copper theft.

• SIMPLE ONE-STEP INSPECTION

Easily inspect your Swage in seconds with the handheld "Go/No-Go" Inspection Gauge.

• CUSTOM SOLUTIONS AVAILABLE

A wide range of cable configurations and connector types (including Ropelay Cable, metric sizes, copper and EHV rated parts) are available for any type of job.

For those times you need a quick or custom solution, DMC Power is here to help. Our in-house engineering, R&D, manufacturing and testing teams will develop and deliver exactly what you need faster than anyone else.



Our connectors are available in a variety of configurations and sizes to handle any cable job



The lightweight Swage Tool connects cables in even the most hard to reach places

DMC Power's cable connectors are qualified to meet or exceed nationally recognized standards and tests

Cable Connector Qualifications

ANSI C119.4	Tensile: 30%-53% (Min/Max) of conductor strength; 5% required for Class 3 connectors Current Cycle: 500 cycles (class A); met all thermal & resistance requirements Pre-existing Cable: After tapping into run, Swaged cable retained 90% of rated strength
ASTM B117	Salt Fog: 1,000 hours passed
NEMA CC1	RIV/Corona: Up to 500 kV with factor of safety on applicable fittings Temp Rise & Resistance: Runs cooler than cable at 100%, 125% & 150% of ratings requirements
Customer Requirements	Short Circuit Tests: Pass 3 second short-time & 15 cycle peak withstand tests

CPLK9100**1-HOLE CENTER FORMED
PAD TERMINAL**Up to
230kVPads
2"2" OD Weight
~3 lbs

Cu CCL9100

ANGLES

**ORDERING EXAMPLE****CPLK9100D00040**4/0 Oxlip AAC Barrel to 1", 1-Hole
Center Formed Pad; Aluminum**CPLK9200****2-HOLE CENTER FORMED
PAD TERMINAL**Up to
230kVPads
2"2" OD Weight
~3 lbs

Cu CCL9200

ANGLES

**ORDERING EXAMPLE****CPLK9200D07000**700 Flag AAC Barrel to 2", 2-Hole
Center Formed Pad; Aluminum**CPLK9202****2-HOLE OFFSET
PAD TERMINAL**Up to
230kVPads
2"2" OD Weight
~3 lbs

Cu CCL9202

ANGLES

**ORDERING EXAMPLE****CPLK9202D15105**1351.5 Martin ACSR Barrel to 2",
2-Hole Offset Pad; Aluminum**CPLK9209****2-HOLE 90°
PAD TERMINAL**Up to
230kVPads
2"2" OD Weight
~3 lbs

Cu CCL9209

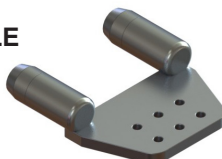
ANGLES

**ORDERING EXAMPLE****CPLK9209D03975**336.4 Linnet ACSR Barrel to 2",
2-Hole 90° Pad; Aluminum**CPLK9662****DUAL BARRELS TO 6-HOLE
OFFSET PAD TERMINAL**Up to
345kVPads
5"/6"2" OD Weight
~7 lbs

Cu CCL9662

5" CPLK9652

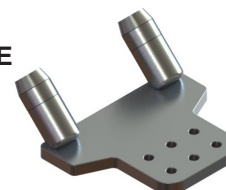
ANGLES

**ORDERING EXAMPLE****CPLK9662D20000**Dual 2000 Cowslip AAC Barrels to
6", 6-Hole Offset Pad; Aluminum**CPLK9664****DUAL BARRELS TO 6-HOLE
45° PAD TERMINAL**Up to
345kVPads
5"/6"2" OD Weight
~7 lbs

Cu CCL9664

5" CPLK9654

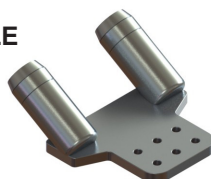
ANGLES

**ORDERING EXAMPLE****CPLK9664D22500**Dual 2156 Bluebird ACSR Barrels to
6", 6-Hole 45° Pad; Aluminum**CPLK9663****DUAL BARRELS TO 6-HOLE
30° PAD TERMINAL**Up to
345kVPads
5"/6"2" OD Weight
~7 lbs

Cu CCL9663

5" CPLK9653


ANGLES

**ORDERING EXAMPLE****CPLK9663D17500**Dual 1750 Jessamine AAC Barrels to
6", 6-Hole 30° Pad; Aluminum**CPLK9672****TRIPLE BARRELS TO 6-HOLE
OFFSET PAD TERMINAL**Up to
345kVPads
5"/6"2" OD Weight
~10 lbs

Cu CCL9672

ANGLES

**ORDERING EXAMPLE****CPLK9672D15900**Three 1590 Coreopsis AAC Barrels
to 6", 6-Hole Offset Pad; Aluminum**CUSTOM PAD WIDTHS**

Many of our connectors have alternative part numbers for different standard pad widths. Look for this icon  underneath the item to see the alternative pad size and standard part number. Of course ANY custom pad configuration can be designed, so if you don't see it just ask!



CPLK9440

4-HOLE CENTER FORMED PAD TERMINAL

Up to
230kV

Pads
3"/4"

2" OD Weight
~5 lbs

Cu CCL9440 3" CPLK9430 ANGLES CEHV9440

ORDERING EXAMPLE

CPLK9440D00020

2/0 Aster ACC Barrel to 4", 4-Hole Center Formed Pad; Aluminum



CPLK9442

4-HOLE OFFSET PAD TERMINAL

Up to
345kV

Pads
3"/4"

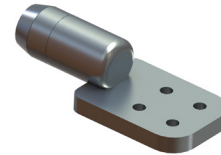
2" OD Weight
~5 lbs

Cu CCL9442 3" CPLK9432 ANGLES CEHV9442

ORDERING EXAMPLE

CPLK9442D13515

1272 Bittern ACSR Barrel to 4", 4-Hole Offset Pad; Aluminum



CPLK9444

4-HOLE 45° PAD TERMINAL

Up to
345kV

Pads
3"/4"

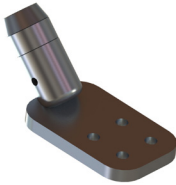
2" OD Weight
~5 lbs

Cu CCL9444 3" CPLK9434 ANGLES CEHV9444

ORDERING EXAMPLE

CPLK9444D07500

750 Cattail AAC Barrel to 4", 4-Hole 45° Pad; Aluminum



CPLK9449

4-HOLE 90° PAD TERMINAL

Up to
230kV

Pads
3"/4"

2" OD Weight
~5 lbs

Cu CCL9449 3" CPLK9439 ANGLES CEHV9449

ORDERING EXAMPLE

CPLK9449D22500

2167 Kiwi ACSR Barrel to 4", 4-Hole 90° Pad; Aluminum

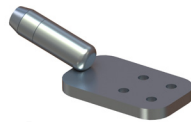


ALSO AVAILABLE:

Copper, EHV, custom pads, angles and other configurations available. Visit the product page on DMCPower.com for details.

CPLK9445

4-HOLE 15° PAD TERMINAL



CPLK9987

LONG BARREL TO 4-HOLE 45° PAD TERMINAL



CPLK9945

DUAL BARRELS TO 4-HOLE 15° OFFSET PAD TERMINAL



CPLK9984

EXTENDED 4-HOLE 90° PAD TERMINAL



SUPERIOR DESIGN



DMC Connector (center)



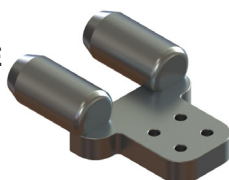
ITS ALL ABOUT THE PADS

DMC Power manufactures our pads from extruded aluminum to meet and exceed NEMA Pad standards. What makes ours different?

- *Machined for perfect flatness*
- *Smooth surface finish = greater amount of contact points*
- *Thicker, oversized factor of safety*
- *Runs cooler*
- *Increased ampacity*
- *Greater resistance to fatigue*
- *Custom sizes, hole placement, barrel angles and mounting positions*
- *NEMA Pad EHV Bolt Shields (PLK8000) also available*

CPLK9642DUAL BARRELS TO 4-HOLE
OFFSET PAD TERMINALUp to
345kV
Pads
3"/4"
2" OD Weight
~ 6 lbs

Cu CCL9642 3" CPLK9632 ANGLES CEHV9642



ORDERING EXAMPLE

CPLK9642D12720Dual 1192.5 Bunting ACSR Barrels
to 4", 4-Hole Offset Pad; Aluminum**CPLK9644**DUAL BARRELS TO 4-HOLE
45° PAD TERMINALUp to
345kV
Pads
3"/4"
2" OD Weight
~ 6 lbs

Cu CCL9644 3" CPLK9634 ANGLES CEHV9644



ORDERING EXAMPLE

CPLK9644D11130Dual 1113 Marigold AAC Barrels
to 4", 4-Hole 45° Pad; Aluminum**CPLK9649**DUAL BARRELS TO 4-HOLE
90° PAD TERMINALUp to
230kV
Pads
3"/4"
2" OD Weight
~ 6 lbs

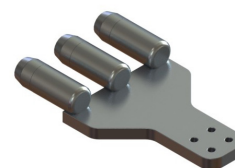
Cu CCL9649 3" CPLK9639 ANGLES CEHV9649



ORDERING EXAMPLE

CPLK9649D22500Dual 2156 Bluebird ACSR Barrels
to 4", 4-Hole 90° Pad; Aluminum**CPLK9982**TRIPLE BARRELS TO 4-HOLE
OFFSET PAD TERMINALUp to
345kV
Pads
4"/6"
2" OD Weight
~ 9 lbs

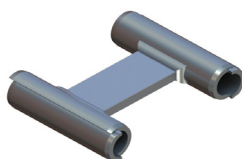
Cu CCL9982 6" CPLK9672 ANGLES



ORDERING EXAMPLE

CPLK9982D13515Three 1351.5 Columbine AAC Barrels
to 4", 4-Hole Offset Pad; Aluminum**CL702**PARALLEL CABLE
SPACERUp to
500kV
2" OD Weight
~3 lbs

Cu CCL702 SPLIT EHV



ORDERING EXAMPLE

Cable Run Size
Spacing Inches
CL702D09540-8

Dual 954 Magnolia AAC Cables Spaced 8"; Aluminum

CL714PARALLEL CABLE SPACER TO
TRANSVERSE 4-HOLE PADUp to
500kV
Pads
3"/4"
2" OD Weight
~ 5 lbs

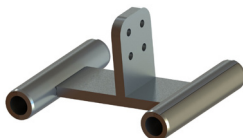
Cu CCL714 3" CL713 SPLIT EHV




ORDERING EXAMPLE

Cable Run Size
Spacing Inches
CL714D22500-18Dual 2167 Kiwi ACSR Cables Spaced 18"
with 4", 4-Hole Transverse Pad; Aluminum

ALSO AVAILABLE:

CL715CABLE SPACER TO
LONGITUDINAL PAD**CL773**TRIFURCATING
CABLE SPACER**COPPER CABLE CONNECTORS**

All DMC Power cable connectors can be manufactured out of pure copper, with the exact same specifications and standards that meet or exceed our Aluminum ratings. This is the perfect solution when using copper conductors in coastal/high corrosive areas or to achieve higher ampacity. Look for this icon  **CCL####** underneath the main item for the copper cable base part number and use the chart at the bottom of page 30 to find the connector identifier number used to complete the fitting.

**APPLICATION
NOTES**

CL720 CABLE SPLICE

Up to
500kV

2" OD Weight
~1 lb

Cu CCL720 EHV



ORDERING EXAMPLE

CL720D03975

397.5 Canna AAC Cable Splice; Aluminum

CL731 SPLIT RUN TAP

Up to
500kV

2" OD Weight
~2 lbs

Cu CCL731 SPLIT ANGLES EHV



ORDERING EXAMPLE

CL731D07950-00040

795 Lilac AAC Cable Run to 4/0 Oxlip AAC Cable Tap; Aluminum

Cable Run Size
Cable Tap Size

CPLK9584

SPLIT RUN TO 4-HOLE TRANSVERSE PAD TEE

Up to
500kV

Pads
3 3/4"

2" OD Weight
~5 lbs

Cu CCL9584 3" CPLK9583 SPLIT EHV



ORDERING EXAMPLE

CPLK9584D02668

266.8 Waxwing ACSR Split Run to 4", 4-Hole Transverse Pad Tee; Aluminum

CPLK9514

SPLIT RUN TO 4-HOLE LONGITUDINAL PAD TEE

Up to
500kV

Pads
3 3/4"

2" OD Weight
~5 lbs

Cu CCL9514 3" CPLK9513 SPLIT EHV



ORDERING EXAMPLE

CPLK9514D00040

3/0 Pigeon ACSR Split Run to 4", 4-Hole Longitudinal Pad Tee; Aluminum

CL994

U-SHAPED GROUND STIRRUP

2" OD Weight
~10 lbs

Cu COPPER SPLIT TIN-PLATING



ORDERING EXAMPLE

CL994B07500-04500

750 MCM Bare Copper Split Run with 3/4" U-Shaped Ground Rod

Copper Cable Run*
Copper Rod Size
(04500=3/4")

CL995

V-SHAPED GROUND STIRRUP

2" OD Weight
~11 lbs

Cu COPPER SPLIT TIN-PLATING



ORDERING EXAMPLE

CL995B15000-04500

1500 MCM Bare Copper Split Run with 3/4" V-Shaped Ground Rod

Copper Cable Run*
Copper Rod Size
(04500=3/4")

CL761

SPLIT RUN GROUND STIRRUP

2" OD Weight
~3 lbs

Cu CCL761 SPLIT



ORDERING EXAMPLE

CL761D22500

2250 Sagebrush AAC Split Run with Ground Stirrup; Aluminum

CL993

FLEX CABLE GROUND LOOP

2" OD Weight
~8 lbs

Cu COPPER SPLIT TIN-PLATING



ORDERING EXAMPLE

CL993B00040-02500

4/0 AWG Bare Copper Split Run with 250 MCM Bare Copper Flex Loop

Copper Cable Run*
Ground Loop
Cable Size*

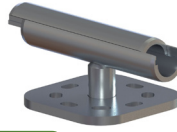
* See chart on page 30 for Copper Cable Connector Identifier Numbers

ROPELAY CABLE AND METRIC SIZES AVAILABLE

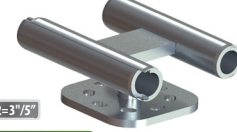
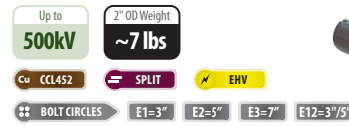


Ropelay Cable

Because DMC Power manufactures everything from scratch based on your requirements, it's impossible for us to list the tens of thousands of different connectors and configurations possible in this catalog. If you're looking for Metric sizes, Ropelay Cable or any other custom configuration, just call us at **888-SWAGE-NOW** and let our in-house Engineering department do the work for you!

CL451**SPLIT RUN SINGLE CABLE SUPPORT****ORDERING EXAMPLE**

CL451D09000 E3 — Bolt Circle
795 Drake ACSR Split Run Cable Support
with 7" Bolt Circle; Aluminum

CL452**SPLIT RUN DUAL CABLE SUPPORT****ORDERING EXAMPLE**

CL452D12720 E1 — Bolt Circle
1272 Narcissus AAC Split Run Dual Cable
Support with 3" Bolt Circle; Aluminum

CL430**BUS TO CABLE TAP****ORDERING EXAMPLE**

CL430D48-07950 — Bus Run Size
Cable Tap Size
3" Bus Run to 795 Lilac AAC Tap; Aluminum

CL432**BUS TO DUAL CABLE TAPS****ORDERING EXAMPLE**

CL432D40-18000 — Bus Run Size
Cable Tap Size
2-1/2" Bus Run to Dual 1590 Falcon ACSR Taps; Aluminum

CL400**BUS TO CABLE COUPLER****ORDERING EXAMPLE**

CL400D32-11130 — Bus Run Size
Cable Tap Size
2" Bus Coupler to 1113
Marigold AAC Tap; Aluminum

CL404**BUS TO 45° CABLE COUPLER****ORDERING EXAMPLE**

CL404D80-09000 — Bus Run Size
Cable Tap Size
5" Bus Coupler to 795
Drake ACSR 45° Tap; Aluminum

CL420**BUS TO DUAL IN-LINE
CABLE TAPS****ORDERING EXAMPLE**

CL420D80-25000 — Bus Run Size
Cable Tap Size
5" Bus Coupler to Dual 2500
Lupine AAC In-Line Taps; Aluminum

CL489**BUS TO TRIPLE SIDE
FORMED CABLE TAPS****ORDERING EXAMPLE**

CL489D96-25000 — Bus Run Size
Cable Tap Size
6" Bus to Three 2312 Thrasher
ACSR Side Formed Taps; Aluminum

REDUCE BUS-TO-CABLE HOT SPOTS & MAINTENANCE

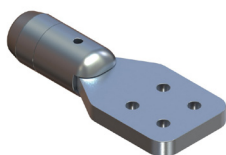
Why bolt pads together when you can have an all-in-one connection? Bolted connections require additional re-tightening, inspection and may lead to hot spots at the pad. Our CL style of Bus-to-Cable connectors are designed, machined and welded together to be a seamless connection between the two distinct styles. Any option you can think of is possible - go to **DMCPower.com** for a more complete listing.

CEHV9440

EHV 4-HOLE CENTER FORMED PAD TERMINAL

Up to
345kV

2" OD Weight
~2 lbs



ORDERING EXAMPLE

CEHV9440D12720

1272 Narcissus AAC Barrel to 4",
4-Hole Center Formed Pad; EHV

CEHV9442

EHV 4-HOLE OFFSET PAD TERMINAL

Up to
500kV

2" OD Weight
~6 lbs



ORDERING EXAMPLE

CEHV9442D22500

2156 Bluebird ACSR Barrel to 4",
4-Hole Offset Pad; EHV

CEHV9444

EHV 4-HOLE 45° PAD TERMINAL

Up to
500kV

2" OD Weight
~6 lbs



ORDERING EXAMPLE

CEHV9444D10000

1000 Hawkweed AAC Barrel to 4",
4-Hole 45° Pad; EHV

CEHV9642

EHV DUAL BARRELS TO 4-HOLE CENTER FORMED PAD TERMINAL

Up to
500kV

2" OD Weight
~10 lbs



ORDERING EXAMPLE

CEHV9642D22500

Dual 2250 Sagebrush AAC Barrels to 4",
4-Hole Center Formed Pad; EHV

CEHV9644

EHV DUAL BARRELS TO 4-HOLE 45° PAD TERMINAL

Up to
500kV

2" OD Weight
~11 lbs



ORDERING EXAMPLE

CEHV9644D22500

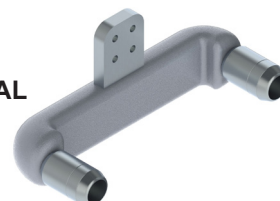
Dual 2156 Bluebird ACSR Barrels to 4",
4-Hole 45° Pad; EHV

CEHV9649

EHV DUAL BARRELS TO 4-HOLE 90° PAD TERMINAL

Up to
500kV

2" OD Weight
~12 lbs



ORDERING EXAMPLE

CEHV9649D09540

Dual 900 Ruddy ACSR Barrels to 4",
4-Hole 90° Pad; EHV

- Bolt shields and corona rings are available
- Check with factory on cable sizes, spacing and for special EHV applications

APPLICATION NOTES

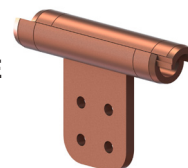
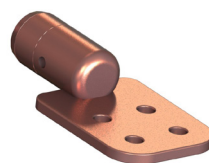
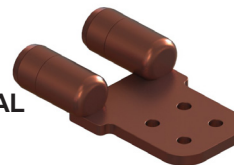
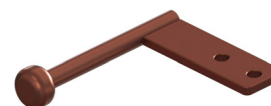


EXTRA HIGH VOLTAGE RATINGS

Many of our Cable and Bus connectors have EHV equivalents rated up to 500kV and 765kV.

- Tested Corona free
- Reduced power loss and radio noise
- Pre-drilled weep holes and high quality surface finish
- Designed-in shielding rings with generous mass & radii for high ampacity and voltage

Look for this symbol below the parts to know they are rated for certain EHV applications or let us design a custom EHV connector for your specific needs.

CCL9202**COPPER 2-HOLE OFFSET
PAD TERMINAL****ORDERING EXAMPLE****CCL9202B05000**500 MCM Bare Copper Barrel to 2",
2-Hole Offset Pad**CCL9514****COPPER SPLIT RUN TO 4-HOLE
LONGITUDINAL PAD TEE****ORDERING EXAMPLE****CCL9514B00040**4/0 AWG Bare Copper Split Run to 4",
4-Hole Longitudinal Pad Tee**CCL9442****COPPER 4-HOLE OFFSET
PAD TERMINAL****ORDERING EXAMPLE****CCL9442B20000**2000 MCM Bare Copper Barrel to 4",
4-Hole Offset Pad**CCL9642****COPPER DUAL BARRELS TO
4-HOLE OFFSET PAD TERMINAL****ORDERING EXAMPLE****CCL9642B10000**Dual 1000 MCM Bare Copper Barrels to 4",
4-Hole Offset Pad**CCL731****COPPER SPLIT
RUN TAP****ORDERING EXAMPLE****CCL731B07500-00040**750 MCM Bare Copper Split Run
to 4/0 AWG Bare Copper TapSplit Run Size
Tap Size**CCL1163****COPPER GROUND STUD
TO 2-HOLE PAD****ORDERING EXAMPLE****CCL1163B90 E3**3/4" Ground Stud to 2" Wide, 6" Long,
2-Hole 90° Pad


• Add "T" to the end of any part number for Tin Plating

PROTECT YOUR INVESTMENT WITH TIN PLATING

No matter if you're ordering a 6" aluminum bus expansion or a #6 gauge copper ground splice, DMC Power can plate it all - and fast. Our tin plating process:



- Dramatically reduces the effects of oxidization, especially in extreme weather environments
- Keeps conductivity high so more power is pushed through the smooth, clean surface
- Improves connector longevity
- Allows for the joining of two dissimilar metals
- Helps deter theft by eliminating visible copper

Our most popular tin plated items have this icon  next to them, but anything is possible. Insert a "T" at the end of the complete part number when ordering (ex: CPLK9442D04500T) and leave the rest up to us.**CUSTOM
SOLUTIONS**

BUILDING THE PERFECT CONNECTOR

Our connectors are designed to fit the exact diameter of the cable being used. This precision ensures that the level of compression and contact between the cable, the connector and the inner strands of cable are at the highest possible value.

Selecting the properly sized connector and corresponding Swage Tooling couldn't be easier. Simply follow steps 1 & 2 in the chart below to find the 5-digit Connector Identifier Number used in our standard connector ordering nomenclature on page 30. Based on that number, step 3 will list which head assembly size is required to install that particular connector O.D.

Call our customer service team at **888-SWAGE-NOW** if you have questions about selecting your connector or for other cable types and sizes not listed.



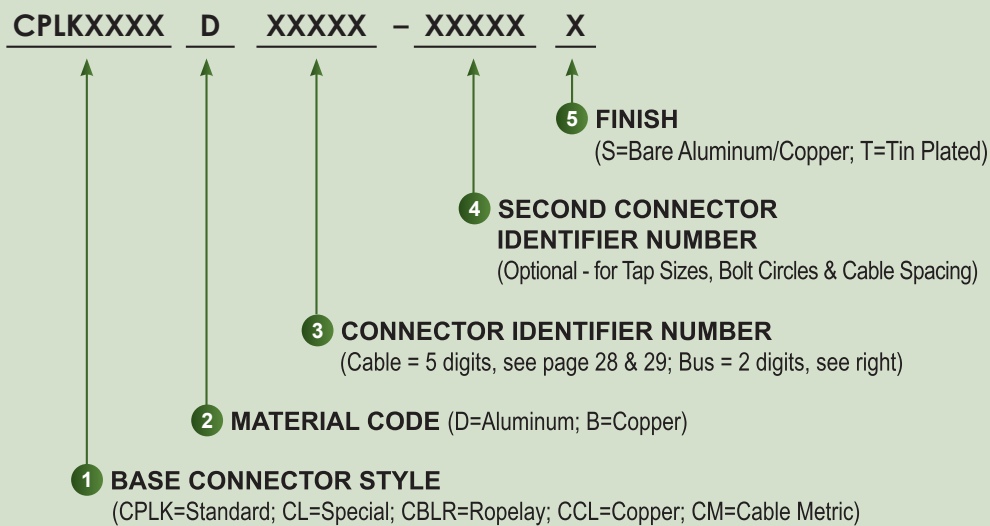
- 1 Find the AAC/ACSR conductor being used
- 2 Use the corresponding Connector Identifier Number to fill out the part number, see page 30
- 3 Note the Head Assembly size based on the Connector Identifier Number

AAC CONDUCTOR			ACSR CONDUCTOR			Connector Identifier Number	CONNECTOR	
SIZE (kcmil)	STR (Al/St)	CODE WORD	SIZE (kcmil)	STR (# Wires)	CODE WORD		HEAD ASSEMBLY*	O.D.
#6	7/w	Peachbell	#6	6/1	Turkey	00006	DLT45CLHA00004	0.500
#4	7/w	Rose	#5	6/1	Thrush	00004		
#2	7/w	Iris	#4	6/1	Swan	00002	DLT45CLHA00010	0.750
#1	7/w	Pansey	#2	7/1	Swanate	00001		
					Sparrow			
1/0	7/w	Poppy	#1	6/1	Sparate	00010	DLT45CLHA02500	1.000
2/0	7/w	Aster	#1	6/1	Robin	00020		
3/0	7/w	Phlox	1/0	6/1	Raven	00030		
4/0	7/w	Oxlip	2/0	6/1	Quail	00040		
250.0	7/w	Sneezewort	3/0	6/1	Pigeon	02500	DLT45CLHA03975	1.250
	7/w	Valerian	4/0	6/1	Penguin	02668		
266.8	7/w	Daisy	266.8	18/1	Waxwing	03000		
	19/w	Laurel		26/7	Partridge	03500		
300.0	19/w	Peony	300.0	26/7	Ostrich	03975		
336.4	19/w	Tulip		18/1	Merlin			
350.0	19/w	Daffodil	336.4	26/7	Linnet		DLT45CLHA05565	1.500
397.5	19/w	Canna		30/7	Oriole			
			397.5	18/1	Chickadee	04500		
450.0	19/w	Goldentuft		24/7	Brant	04770		
			397.5	26/7	Ibis			
477.0	19/w	Cosmos		30/7	Lark	05000		
	37/w	Syringa				05565		
500.0	19/w	Zinnia		18/1	Pelican			
	37/w	Hyacinth	477.0	24/7	Flicker			
556.5	19/w	Dahlia		26/7	Hawk			
	37/w	Mistletoe						

AAC CONDUCTOR			ACSR CONDUCTOR			Connector Identifier Number	CONNECTOR	
SIZE (kcmil)	STR (Al/St)	CODE WORD	SIZE (kcmil)	STR (# Wires)	CODE WORD		HEAD ASSEMBLY*	O.D.
600.0	37/w	Meadowsweet	477.0	30/7	Hen	06000	DLT45CLHA07155	1.750
636.0	37/w	Orchid	556.5	18/1	Osprey	06360		
700.0	37/w	Verbena		24/7	Parakeet			
				26/7	Dove			
			30/7	Eagle				
715.5	37/w	Flag	636.0	18/1	Kingbird	07000		
				36/1	Swift			
				24/7	Peacock			
715.5	37/w	Violet	605.0	26/7	Squab	07155		
	61/w	Nasturtium						
750.0	37/w	Petunia	605.0	30/7	WoodDuck	07500	DLT45CLHA08745	1.875
				30/19	Teal			
				61/w	Cattail			
795.0	37/w	Arbutus	26/7	Grosbeak	07950			
			30/7	Scoter				
			30/19	Egret				
			24/7	Flamingo				
			26/7	Gannet				
			24/7	Stilt				
			54/7	Crow				
874.5	37/w	Anemone	795.0	36/1	Coot	08745		
				45/7	Tern			
				26/7	Starling			
874.5	61/w	Crocus	715.5	30/19	Redwing			
900.0	37/w	Cockscomb	795.0	24/7	Cuckoo	09000	DLT45CLHA11130	2.000
				54/7	Condor			
				26/7	Drake			
954.0	37/w	Magnolia	900.0	30/19	Mallard	09540		
				61/w	Goldenrod			
1000.0	37/w	Hawkweed	874.5	45/7	Ruddy	10000		
				54/7	Canary			
				61/w	Camellia			
1033.5	37/w	Bluebell	954.0	54/7	Cardinal	10335		
1113.0	61/w	Marigold	1033.5	45/7	Ortolan	11130		
				54/7	Curlew			
1192.5	61/w	Hawthorn	1113.0	45/7	Bluejay	11925	DLT45CLHA15900	2.250
1272.0	61/w	Narcissus	1192.5	54/19	Finch	12720		
				45/7	Bunting			
1351.5	61/w	Columbine	1272.0	54/19	Grackle	13515		
				45/7	Bittern			
1431.0	61/w	Carnation	1351.5	54/19	Pheasant	14310		
				45/7	Dipper			
1510.5	61/w	Gladiolus	1431.0	54/19	Martin	15105		
				45/7	Bobolink			
1590.0	61/w	Coreopsis	1510.5	54/19	Plover	15900		
				45/7	Nuthatch			
1750.0	61/w	Jessamine	1590.0	54/19	Parrot	17500		
				45/7	Lapwing			
			1590.0	54/19	Falcon	18000		
2000.0	91/w	Cowslip	1780.0	84/19	Chukar	20000	DLT58CLHA25000*	2.750
2250.0	91/w	Sagebrush	2156.0	84/19	Bluebird	22500		
			2167.0	72/7	Kiwi			
2303.5	91/w					23000		
2500.0	91/w	Lupine	2312.0	76/19	Thrasher	25000		
3000.0	127/w	Trillium				30000	DLT58CLHA40000*	3.250
3500.0	127/w	Bluebonnet				35000		
4326.9	127/w	Nightshade				43269		

*DLT58- Heads Assemblies use the **DLT58MAPW0000** Power Unit; DLT45- Head Assemblies use the **DLT45MAPW0000** Power Unit

CABLE CONNECTOR ORDERING NOMENCLATURE



BUS SIZES		
DMC SIZE	PIPE SIZE	FITTING O.D.
12	3/4"	2.000
16	1"	2.000
20	1-1/4"	2.500
24	1-1/2"	2.500
32	2"	3.000
40	2-1/2"	3.750
48	3"	4.375
56	3-1/2"	5.000
64	4"	5.500
80	5"	6.500
96	6"	8.000

STANDARD EXAMPLE:

CPLK9209	D	00006	S
↑ 2-Hole 90° Terminal		↑ #6 Peachbell AAC Cable	↑ Bare Aluminum

BUS TO CABLE EXAMPLE:

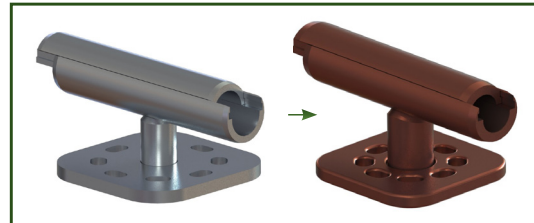
CL400	D	64	- 11130	T
↑ Bus to Cable Coupler		↑ 4" Bus Run	↑ 1033.5 Curlew ACSR Cable	↑ Tin Plated

COPPER CABLE EXAMPLE:

CCL9442	B	04500	T
↑ Copper 4-Hole Offset Terminal		↑ 450/AWG Copper Cable	↑ Tin Plated

COPPER CABLE SIZE SELECTION CHART

- The Connector Identifier Numbers listed below should only be used with copper cable conductors
- Every aluminum connector can be designed into a copper equivalent, contact DMC Power for details



BARE COPPER CONDUCTOR CONCENTRIC LAY STRANDED		Connector Identifier Number
SIZE (AWG / kcmil)	STR	
1/0	19	00010
2/0	19	00020
3/0	19 & 37	00030
4/0	19	00040
250	19 & 37	02500
300	37	03000
350	37	03500
400	37	04000
450	19	04500
500	37 & 61	05000

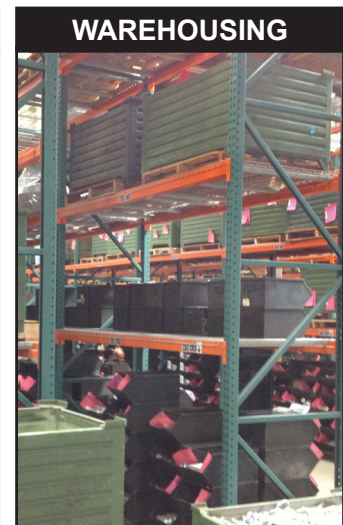
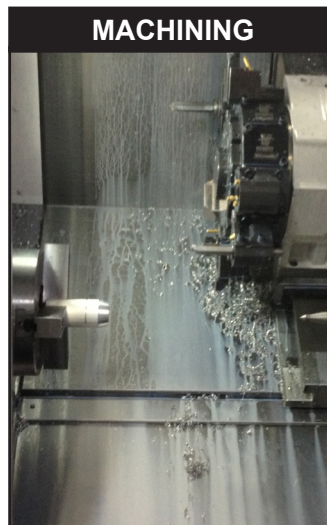
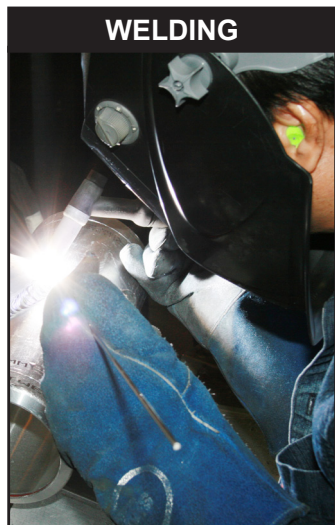
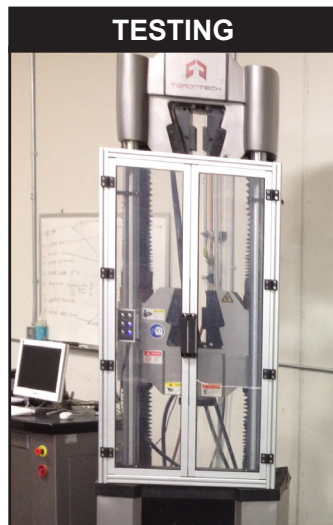
BARE COPPER CONDUCTOR CONCENTRIC LAY STRANDED		Connector Identifier Number
SIZE (AWG / kcmil)	STR	
600	61	06000
650	37	06500
700	61	07000
750	61 & 91	07500
800	61	08000
900	37	09000
1000	61 & 91	10000
1250	91 & 127	12500
1500	91 & 127	15000
1750	61 & 127	17500
2000	127 & 169	20000

IF YOU NEED IT, WE CAN BUILD IT.



- Custom designed fittings for any size job
- Quick turn-around time
- Low minimum order quantity
- Worldwide shipping

Our in-house engineering, test lab and manufacturing facilities allow DMC Power to move fast and deliver quick turn jobs before most companies will even give you a response. Our flexibility and ability to make any part, of any size and any dimension is an advantage you simply won't find anywhere else.



THESE ARE JUST A FEW OF THE CUSTOM CONNECTORS WE'VE BUILT FOR OUR CUSTOMERS:

Adjustable
Terminal Elbow



Triple Cable to
4-Hole Pad



Flat Cable Coupler



Ground Jumper
Assembly



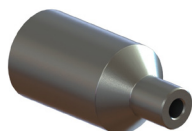
Split Cable Run
to Bus Tap



Dual Size
Barrel Tap



Internal Vibration
Dampener



Split Tee Run to
22.5° Tap



Dual Pad
Terminal



Bus Support Tee

